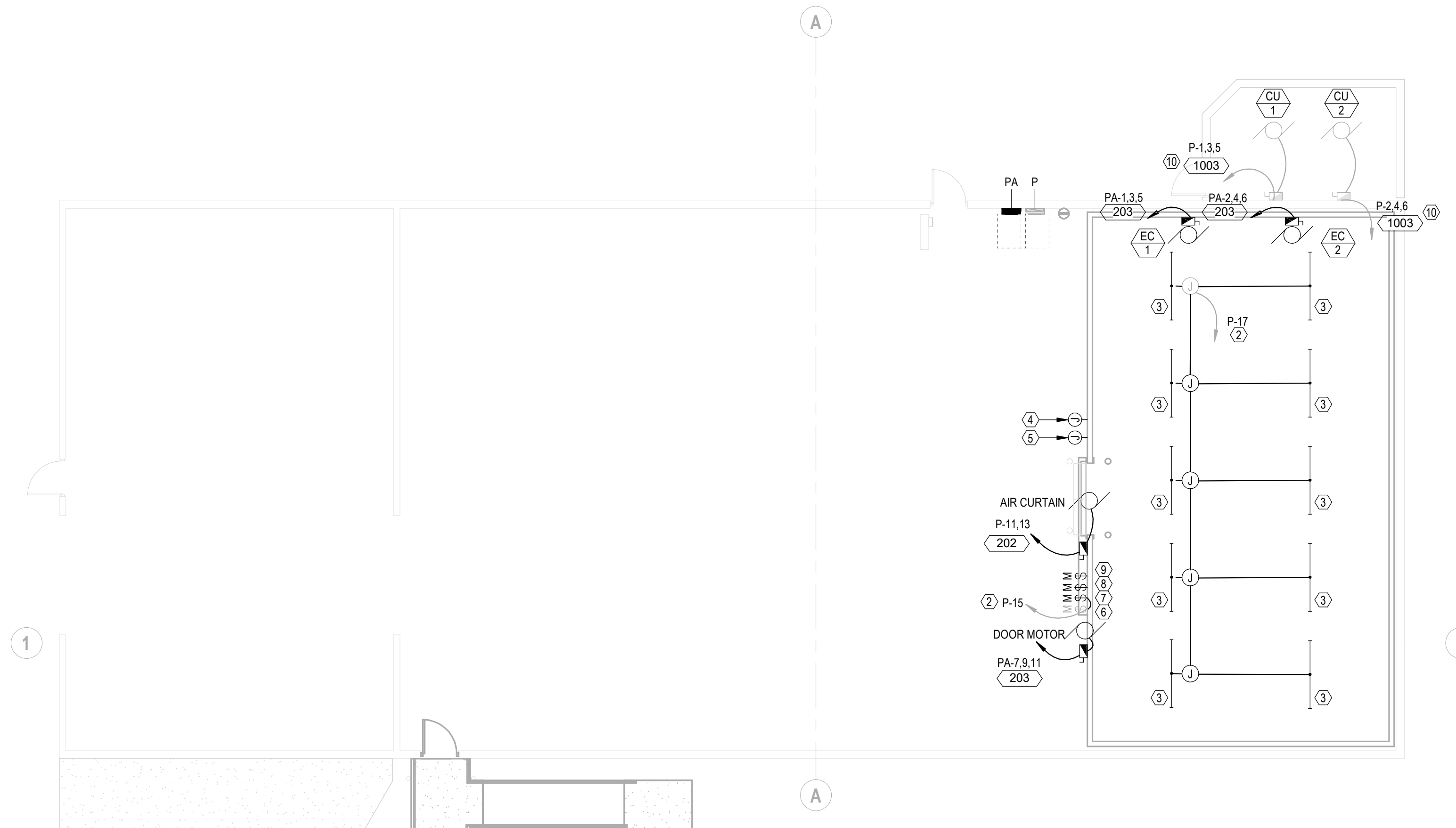


**1 ELECTRICAL PLAN - DEMO**  
1/8" = 1'-0"



**2 ELECTRICAL PLAN - NEW WORK**  
1/8" = 1'-0"

#### KEYNOTES (X)

- 1 DISCONNECT AND REMOVE EQUIPMENT. MAINTAIN CONDUIT, WIRING AND DISCONNECT FOR RECONNECTION.
- 2 CONNECT EXISTING CIRCUIT TO NEW EQUIPMENT.
- 3 NEW LIGHT FIXTURES PROVIDED BY FREEZER MANUFACTURER. PROVIDE NEW JUNCTION BOXES, CONDUIT, AND WIRE.
- 4 PROVIDE JUNCTION BOX FOR HIGH-VOLTAGE TEMPERATURE ALARM.
- 5 PROVIDE JUNCTION BOX FOR LOW-VOLTAGE TEMPERATURE ALARM.
- 6 POWER FOR HEATED DOOR LEAF (SLIDER).
- 7 POWER FOR HEATED DOOR LEAF (PERSONNEL).
- 8 POWER FOR HEATED THRESHOLD.
- 9 POWER FOR HEATED WINDOW.
- 10 EXISTING MECHANICAL EQUIPMENT, DISCONNECT, AND FEEDER TO REMAIN.

#### GENERAL NOTES

1. ALL PENETRATIONS THROUGH FREEZER WALLS SHALL BE SEALED.
2. ALL ELECTRICAL RACEWAYS SHALL BE SEALED.



©SGPA 2024

PREPARED FOR THE  
**BOARD OF EDUCATION**  
NATIONAL SCHOOL DISTRICT  
NATIONAL CITY, CALIFORNIA

PREPARED BY  
**SGPA ARCHITECTURE**  
AND PLANNING  
1400 N AVENUE  
NATIONAL CITY, CA 91950

**ELECTRICAL PLANS**

**CENTRAL WAREHOUSE**  
FREEZER REPLACEMENT  
1400 N AVENUE  
NATIONAL CITY, CA 91950

SUBMITTALS / REVISIONS		
#	ISSUE	DATE
1	DSA SUBMITTAL V1	03/19/2025
2	DSA BACKCHECK	04/30/2025

**BID SET 5/1/2025**  
**NOT FOR**  
**CONSTRUCTION**  
**PROJECT STILL IN**  
**REVIEW**

PROJECT NO. 22439-E-02  
SHEET NO.

**E-101**